

# Voltsmile

## 2024



CATALOGUE

# Continue From Last year



As we mark Voltsmiles first anniversary, we take pride in the strides we've made as a lithium-ion battery company. Over the past year, we have diligently worked towards providing reliable and sustainable energy solutions to households. Our commitment to innovation and customer satisfaction has allowed us to carve a niche in the market. We've not only established ourselves but also earned the trust of our partners who helped our products to power homes efficiently. As we celebrate this significant milestone, we express gratitude to our dedicated our partners and loyal customers for being integral to our success. The journey has been rewarding, and we eagerly anticipate further growth and the opportunity to continue powering homes with unique battery technology in the years to come.

Voltsmile



# CLASSIC SERIES

**A** testament to reliability, longevity, and enduring performance, crafted with precision and incorporating time-tested technologies, the Classic Series stands as a hall mark of excellence in our product lineup. These batteries are engineered to meet the demands of various applications, combining durability with consistent power delivery. From residential to industrial settings, the Classic Series showcases a heritage of quality, setting the standard for dependable energy solutions. Discover a legacy of innovation and trust as we proudly present our Classic Series.

**Voltsmile**



# V5

The Voltsmile V5 Lithium Iron Battery, the pinnacle of energy efficiency and reliability for your power needs. Engineered to deliver optimal performance, the Voltsmile V5 operates at a voltage of 48V with an impressive capacity of 2.4kWh, making it the perfect choice for a variety of applications, for home energy storage systems and beyond.



19" INCH RACK

OPTION

Light WEIGHT

COLD CLIMATE

EXPANDABLE

**VOLTAGE** 48V  
**CAPACITY** 2,400Wh  
**CHARGING CURRENT** 50A  
**DISCHARGING CURRENT** 50A  
**COMMUNICATIONS** CAN RS485  
**NUMBER IN PARALLEL** 63  
**WEIGHT** 26KG  
**DIMENSIONS** 410\*442\*133(3U)  
**WORKING TEMP** 0°C~50°C  
**STORE TEMP** -20°C~55°C  
**IP RATING** IP20  
**HUMIDITY** 5%~95%(RH)  
**ALTITUDE** <3500M  
**WARRANTY** 10YEARS  
**DESIGNED LIFE** 10YEARS+  
**CERTIFICATIONS** IEC62619 UN38.3  
CEROHS



Voltsmile

BEST SELLER  
**V10**

The Voltsmile V10 Lithium Iron Battery Pack, the cutting-edge solution designed to meet your most demanding power needs. With a robust voltage of 51.2V and a substantial capacity of 5.12kWh, the Voltsmile V10 stands as a testament to advanced engineering and unparalleled performance. Ideal for a wide range of applications, this battery pack is your go-to choice for reliability, efficiency, and sustainability.



**VOLTAGE** 51.2V  
**CAPACITY** 5,120Wh  
**CHARGING CURRENT** 100A  
**DISCHARGING CURRENT** 100A  
**COMMUNICATIONS** CAN RS485  
**NUMBER IN PARALLEL** 63  
**WEIGHT** 42KG  
**DIMENSIONS** 470\*442\*133(3U)  
**WORKING TEMP** 0°C~50°C  
**STORE TEMP** -20°C~55°C  
**IP RATING** IP20  
**HUMIDITY** 5%~95%(RH)  
**ALTITUDE** <3500M  
**WARRANTY** 10YEARS  
**DESIGNED LIFE** 10YEARS+  
**CERTIFICATIONS** IEC62619 UN38.3  
CEROHS



**Voltsmile**



# V ACCESSORIES



## The V Bracket

The V bracket house is designed to accommodate up to eight V5 battery units or 6 V10 Battery units, offering a versatile and efficient power solution. Its lightweight construction ensures easy portability and installation, making it a convenient choice for various applications. The simple yet robust design of the V bracket not only enhances the user experience but also ensures a sleek and organized setup for powering electronic devices. Whether in a professional setting or for personal use, the V bracket house proves to be a reliable and user-friendly solution for managing multiple V series battery units with ease.

## The Wall Cabinet

The wall cabinet is a practical storage solution that accommodates two V5 or V10 battery units securely on the wall. Its design includes state-of-charge indications, providing users with real-time information about the battery levels. The cabinet's thoughtful layout ensures full coverage of the batteries, promoting safety and organization. The wall cabinet is an effective and space-efficient way to house V series battery units, making it an ideal choice for those seeking a combination of functionality and aesthetic appeal in managing their power storage needs.

## The 19" Racks

The 19" racks provide a versatile solution for housing up to 10 V5 or V10 batteries in a unified and streamlined design. With compatibility in mind, these racks seamlessly blend in with other server racks or 600mm\*600mm cabinets and racks, ensuring a cohesive and integrated appearance within data center environments. The unified design not only optimizes space but also facilitates easy integration and maintenance. Whether used in professional server rooms or data storage facilities, the 19" racks stand out for their efficiency in accommodating V series batteries while harmonizing with the surrounding infrastructure, making them a practical choice for those seeking a cohesive and space-efficient power storage solution.

# V10RPC

The Voltsmile V10RPC Lithium Iron Battery Pack, a groundbreaking energy solution designed for versatility, reliability, and rapid deployment. Engineered with a robust voltage of 51.2V and a substantial capacity of 5.12kWh, the Voltsmile V10RPC is perfect for a wide range of applications, from emergency power needs to dynamic energy storage solutions.

6000+  
CYCLES

19"  
INCH  
RACK

OPTION

COLD  
CLIMATE

EXPAND  
ABLE

RPC  
RAPID  
CONNECTION  
BUS

**VOLTAGE** 51.2V  
**CAPACITY** 5.120Wh  
**CHARGING CURRENT** 100A  
**DISCHARGING CURRENT** 100A  
**COMMUNICATIONS** CAN RS485  
**NUMBER IN PARALLEL** 63  
**WEIGHT** 42KG  
**DIMENSIONS** 498\*442\*133(3U)  
**WORKING TEMP** 0°C~50°C  
**STORE TEMP** -20°C~55°C  
**IP RATING** IP20  
**HUMIDITY** 5%~95%(RH)  
**ALTITUDE** <3500M  
**WARRANTY** 10YEARS  
**DESIGNED LIFE** 10YEARS+  
**CERTIFICATIONS** IEC62619 UN38.3  
CEROHS



Voltsmile



# V10RPC ACCESSORIES



## The RPC cabinets

The Voltsmile RPC Cabinets, the ultimate solution for fast and efficient energy storage deployment. Designed to house 4-10 Voltsmile V10RPC Lithium Iron Battery Packs, these cabinets provide a seamless, scalable, and reliable way to meet your energy needs with unparalleled ease and speed.

The Voltsmile RPC Cabinets offer solutions for rapidly deploying scalable energy storage systems. Whether you're looking to enhance the energy resilience of your home, business, or industrial facility, or need a flexible solution for mobile and temporary power needs, these cabinets provide the perfect combination of capacity, reliability, and ease of deployment. With integrated safety features and a space-efficient design, you can trust the Voltsmile RPC Cabinets to deliver consistent and safe power when and where you need it.

## The RPC All-in-One

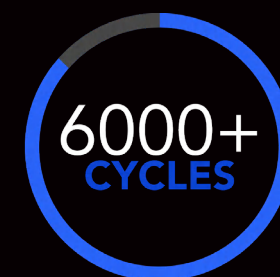
The Voltsmile RPC All-in-One Cabinets, the epitome of efficient and versatile energy storage solutions. Designed to house 4-12 Voltsmile V10RPC Lithium Iron Battery Packs, these all-in-one cabinets offer a quick and easy deployment of energy storage systems with integrated DC and AC busbars and switches. Seamlessly compatible with any inverters of your choice, the Voltsmile RPC All-in-One Cabinets deliver unmatched flexibility and reliability for diverse energy needs.

The Voltsmile RPC All-in-One Cabinets are the premier choice for rapidly deploying scalable and versatile energy storage systems. Whether you're enhancing the energy resilience of your home, business, or industrial facility, or need a flexible solution for mobile and temporary power needs, these cabinets provide the perfect blend of capacity, reliability, and ease of deployment. With integrated busbars and switches, and compatibility with any inverter, you can trust the Voltsmile RPC All-in-One Cabinets to deliver consistent and safe power tailored to your requirements.

**Voltsmile**



UPDATED  
**W1**



**OPTION**

**COLD  
CLIMATE**

**EXPAND  
ABLE**



**VOLTAGE**51.2V  
**CAPACITY**10,240Wh  
**CHARGING CURRENT**100A  
**DISCHARGING CURRENT**100A  
**COMMUNICATIONS**CAN RS485  
**NUMBER IN PARALLEL**16  
**WEIGHT**90KG  
**DIMENSIONS**888\*518\*150  
**WORKING TEMP** 0°C~50°C  
**STORE TEMP** -20°C~55°C  
**IP RATING****IP67**  
**HUMIDITY**5%~95%(RH)  
**ALTITUDE**<3500M  
**WARRANTY**10YEARS  
**DESIGNED LIFE**10YEARS+  
**CERTIFICATIONS**IEC62619UN38.3  
CEROHS

**T**he Voltsmile W1 Wall-Mounting Lithium Iron Battery Pack, the ultimate solution for robust and reliable energy storage. Designed for both indoor and outdoor applications, the Voltsmile W1 operates at a voltage of 51.2V and offers a substantial capacity of 10.24kWh, ensuring dependable power in all conditions. With an IP67 rating, this battery pack is built to withstand the elements, making it ideal for outdoor installations.



**W1**

**Voltsmile**

# PRESTIGE SERIES

**Step** into a new era of home energy solutions with our Prestige Series of batteries, meticulously crafted to redefine power storage for discerning home users. Tailored to meet the unique needs of residential environments, the Prestige Series seamlessly blends advanced technology with user-friendly features. These batteries represent the pinnacle of reliability, offering a dependable source of energy to power your home efficiently. With a focus on elegance and performance, our Prestige Series transforms the way you experience and manage energy at home. Elevate your power expectations and embrace a new standard of excellence with our Prestige Series — where unique style meets cutting-edge innovation for the ultimate home energy solution.



Voltsmile



# S1



OPTION

COLD  
CLIMATE

EXPAND  
ABLE

STACK  
ABLE



**VOLTAGE**51.2V  
**CAPACITY**5.120Wh  
**CHARGING CURRENT**100A  
**DISCHARGING CURRENT**100A  
**COMMUNICATIONS**CAN RS485  
**NUMBER IN PARALLEL**16  
**WEIGHT**44KG  
**DIMENSIONS**520\*255\*330  
**WORKING TEMP** 0°C~50°C  
**STORE TEMP** -20°C~55°C  
**IP RATING**IP65  
**HUMIDITY**5%~95%(RH)  
**ALTITUDE**<3500M  
**WARRANTY**10YEARS  
**DESIGNED LIFE**10YEARS+  
**CERTIFICATIONS**IEC62619UN38.3  
CEROHS

The Voltsmile S1 Stackable Lithium Iron Battery Pack, a stylish and scalable energy solution designed for both indoor and outdoor applications. Operating at a voltage of 51.2V with a capacity of 5.12kWh, the Voltsmile S1 is perfect for those seeking reliable and expandable power storage. With an IP65 rating, this battery pack is built to endure the elements, making it an excellent choice for various outdoor settings.

Voltsmile

# H1



OPTION



HIGH  
VOLTAGE



**VOLTAGE**51.2V  
**CAPACITY**5,120Wh  
**CHARGING CURRENT**100A  
**DISCHARGING CURRENT**100A  
**COMMUNICATIONS**CAN WIRELESS  
**NUMBER IN PARALLEL**12  
**WEIGHT**42KG  
**DIMENSIONS**520\*255\*280  
**WORKING TEMP**0°C~50°C  
**STORE TEMP**-20°C~55°C  
**IP RATING**IP65  
**HUMIDITY**5%~95%(RH)  
**ALTITUDE**<3500M  
**WARRANTY**10YEARS  
**DESIGNED LIFE**10YEARS+  
**CERTIFICATIONS**IEC62619IEC62477  
UN38.3CEROHS

The Voltsmile H1 Stackable High Voltage Lithium Iron Battery Pack, a cutting-edge energy storage solution designed for efficiency, scalability, and style. Operating at 51.2V with a capacity of 5.12kWh, the Voltsmile H1 is perfect for diverse power needs, both indoor and outdoor. With an IP65 rating, this battery pack is built to withstand harsh environments, making it an ideal choice for outdoor applications.

Voltsmile



# PRO | SERIES

**PROSERIES**  
V10 PRO

ADVANCED  
51.2V LiFePo4 BATTERY PACK  
DESIGNED IN THE EU

**Welcome** to the Pro Series of batteries — a robust and versatile energy solution designed to meet the demanding needs of both mini-industrial and home users. Engineered for performance excellence, the Pro Series combines industrial-grade strength with user-friendly features, offering a seamless power experience for diverse applications. Whether you're running a small-scale industrial operation or seeking a reliable energy source for your home, the Pro Series stands as a beacon of power reliability and efficiency. With a focus on durability and adaptability, these batteries empower users to take charge of their energy needs. Experience the professional edge in energy storage with our Pro Series, where strength meets versatility for a dynamic power solution.

**Voltsmile**

# NEW C512

6000+  
CYCLES

19" INCH  
RACK

OPTION

COLD  
CLIMATE

ADVANCED  
DATA LINK

HIGH  
VOLTAGE

APP &  
PORTAL

**VOLTAGE** 512V  
**CAPACITY** 51.2kWh  
**CHARGING CURRENT** 80A  
**DISCHARGING CURRENT** 80A  
**COMMUNICATIONS** CAN WIRELESS  
**NUMBER IN PARALLEL** 6  
**WEIGHT** 560KG  
**DIMENSIONS** 600\*630\*1600  
**WORKING TEMP** 0°C~50°C  
**STORE TEMP** -20°C~55°C  
**IP RATING** IP20  
**HUMIDITY** 5%~95%(RH)  
**ALTITUDE** <3500M  
**WARRANTY** 10YEARS  
**DESIGNED LIFE** 10YEARS+  
**CERTIFICATIONS** IEC62619 IEC62477 UN38.3 CEROHS

The Voltsmile C512 High Voltage Lithium Iron Energy Storage System, a state-of-the-art solution designed to meet the energy demands of large homes, small offices, and small businesses. With an impressive voltage of 512V and a substantial capacity of 51.2kWh, the Voltsmile C512 ensures reliable and efficient power storage, making it the ideal choice for high-capacity energy needs.



Voltsmile



# NEW HV RPC

The Voltsmile HV RPC High Voltage Lithium Iron Battery Packs, the core components of the Voltsmile C512 system. Each battery pack operates at 51.2V with a capacity of 5.12kWh, providing a reliable and scalable solution for your energy storage needs. Designed for versatility and customization, the HV RPC battery packs can be tailored to create the perfect high-voltage energy storage system for large homes, small offices, and small businesses.



OPTION

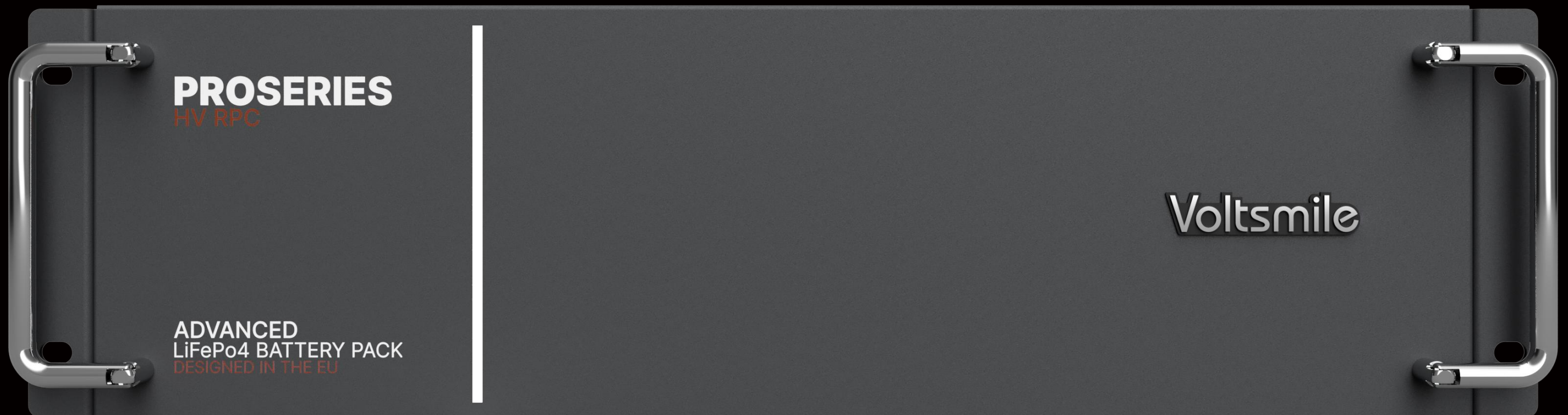
COLD CLIMATE

HIGH VOLTAGE



RPC  
RAPID CONNECTION BUS

**VOLTAGE** 51.2V  
**CAPACITY** 5.120Wh  
**CHARGING CURRENT** 100A  
**DISCHARGING CURRENT** 100A  
**COMMUNICATIONS** CAN WIRELESS  
**NUMBER IN PARALLEL** 10  
**WEIGHT** 42KG  
**DIMENSIONS** 498\*442\*133(3U)  
**WORKING TEMP** 0°C~50°C  
**STORE TEMP** -20°C~55°C  
**IP RATING** IP20  
**HUMIDITY** 5%~95%(RH)  
**ALTITUDE** <3500M  
**WARRANTY** 10YEARS  
**DESIGNED LIFE** 10YEARS+  
**CERTIFICATIONS** IEC62619 UN38.3  
CEROHS



Voltsmile

# NEW V10RPC MKII

The Voltsmile V10RPC Mark II Lithium Iron Battery Pack, the next generation in advanced energy storage solutions. With a voltage of 51.2V and a capacity of 5.12kWh, this battery pack offers quick deployment capability and an even easier setup process, eliminating the need for DIP switches. Designed for efficiency, reliability, and ease of use, the V10RPC Mark II is perfect for both residential and commercial applications.



19" INCH RACK

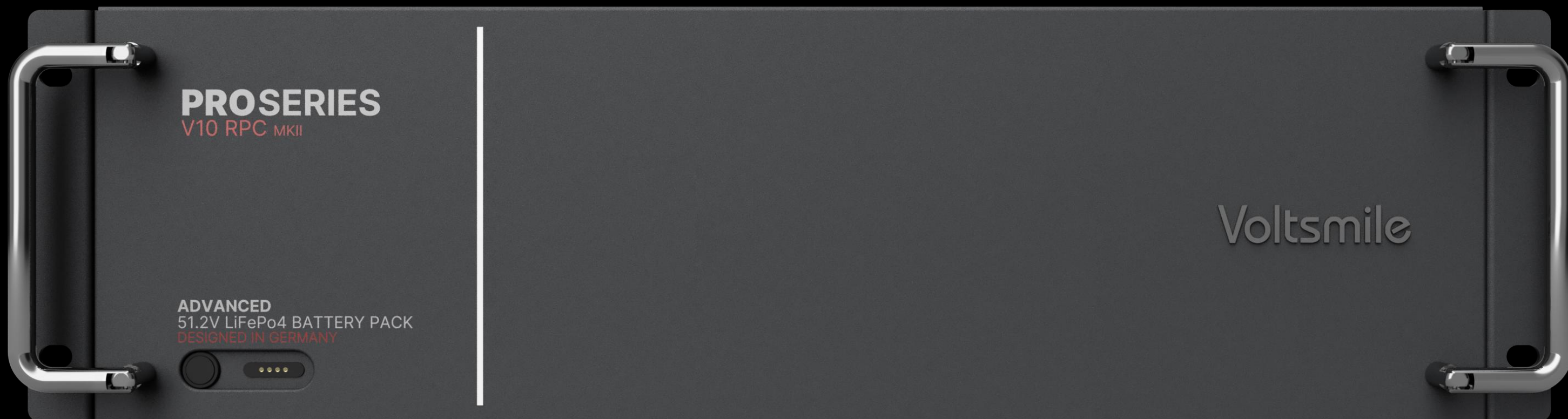
OPTION

COLD CLIMATE

EXPANDABLE

RPC  
RAPID CONNECTION BUS

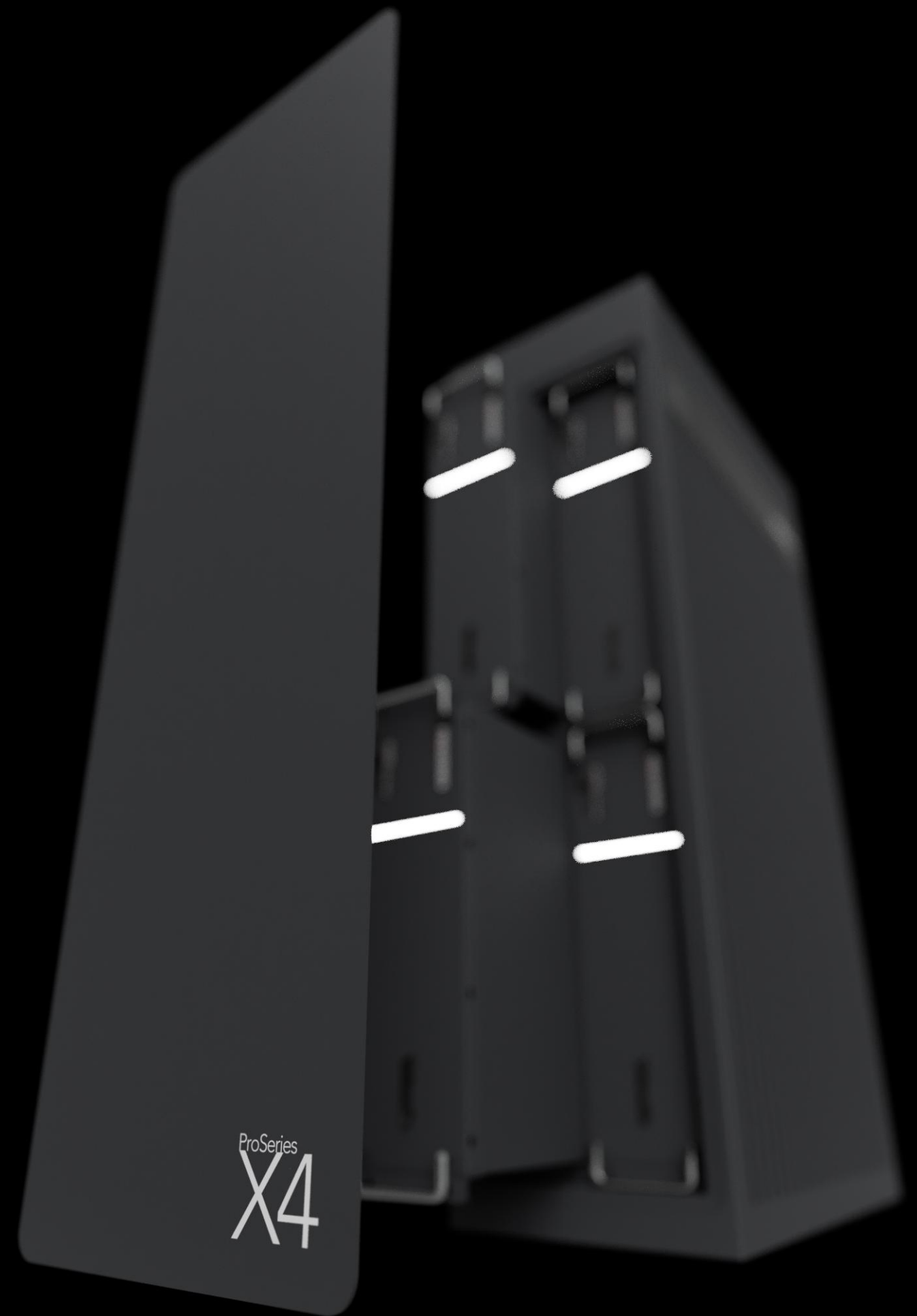
VOLTAGE 51.2V  
CAPACITY 5.120Wh  
CHARGING CURRENT 100A  
DISCHARGING CURRENT 100A  
COMMUNICATIONS CAN RS485  
NUMBER IN PARALLEL 63  
WEIGHT 42KG  
DIMENSIONS 498\*442\*133(3U)  
WORKING TEMP 0°C~50°C  
STORE TEMP -20°C~55°C  
IP RATING IP20  
HUMIDITY 5%~95%(RH)  
ALTITUDE <3500M  
WARRANTY 10YEARS  
DESIGNED LIFE 10YEARS+  
CERTIFICATIONS IEC62619 UN38.3  
CEROHS



Voltsmile

COMING SOON  
ProSeries  
X4

**T**he Voltsmile X4 Battery Cabinet for RPC Mark II, the ultimate housing solution for your Voltsmile RPC Mark II battery packs. Designed to accommodate up to four RPC Mark II units, this cabinet combines robust protection, ease of upgrade, and enhanced functionality. With an IP56 rating, the Voltsmile X4 ensures your energy storage system remains secure and efficient in various environments, providing a reliable and scalable solution for both residential and commercial applications.



**Voltsmile**



COMING SOON  
ProSeries  
X6

**T**he Voltsmile X6 Battery Cabinet for RPC Mark II, the premier housing solution for your Voltsmile RPC Mark II battery packs. Engineered to accommodate up to six RPC Mark II units, this cabinet offers exceptional protection, enhanced upgradability, and superior performance. With an IP56 rating, the Voltsmile X6 ensures your energy storage system is well-protected and highly efficient, making it an ideal choice for both residential and commercial applications.



**Voltsmile**

# Mini COMMERCIAL



Voltsmile

# NEW ProSeries RAID12

6000+  
CYCLES

19"  
INCH  
RACK

OPTION

RPC  
RAPID  
CONNECTION  
BUS

COLD  
CLIMATE

EXPAND  
ABLE

**VOLTAGE** 51.2V  
**CAPACITY** 61.5kWh  
**CHARGING CURRENT** 300A  
**DISCHARGING CURRENT** 300A  
**COMMUNICATIONS** CAN RS485  
**NUMBER IN PARALLEL** 12  
**WEIGHT** 750KG  
**DIMENSIONS** 1200\*630\*2000mm  
**WORKING TEMP** 0°C~50°C  
**STORE TEMP** -20°C~55°C  
**IP RATING** IP20  
**HUMIDITY** 5%~95%(RH)  
**ALTITUDE** <3500M  
**WARRANTY** 10YEARS  
**DESIGNED LIFE** 10YEARS+  
**CERTIFICATIONS** IEC62619 UN38.3  
CEROHS

The Voltsmile Raid12 Energy Storage System, the ultimate high-capacity solution for your energy storage needs. This state-of-the-art system houses up to twelve RPC Mark2 lithium iron battery packs, delivering a combined power of 61.5kWh. Equipped with built-in three-phase inverters, the Voltsmile Raid12 ensures ease of installation and reliable power for both residential and commercial applications.

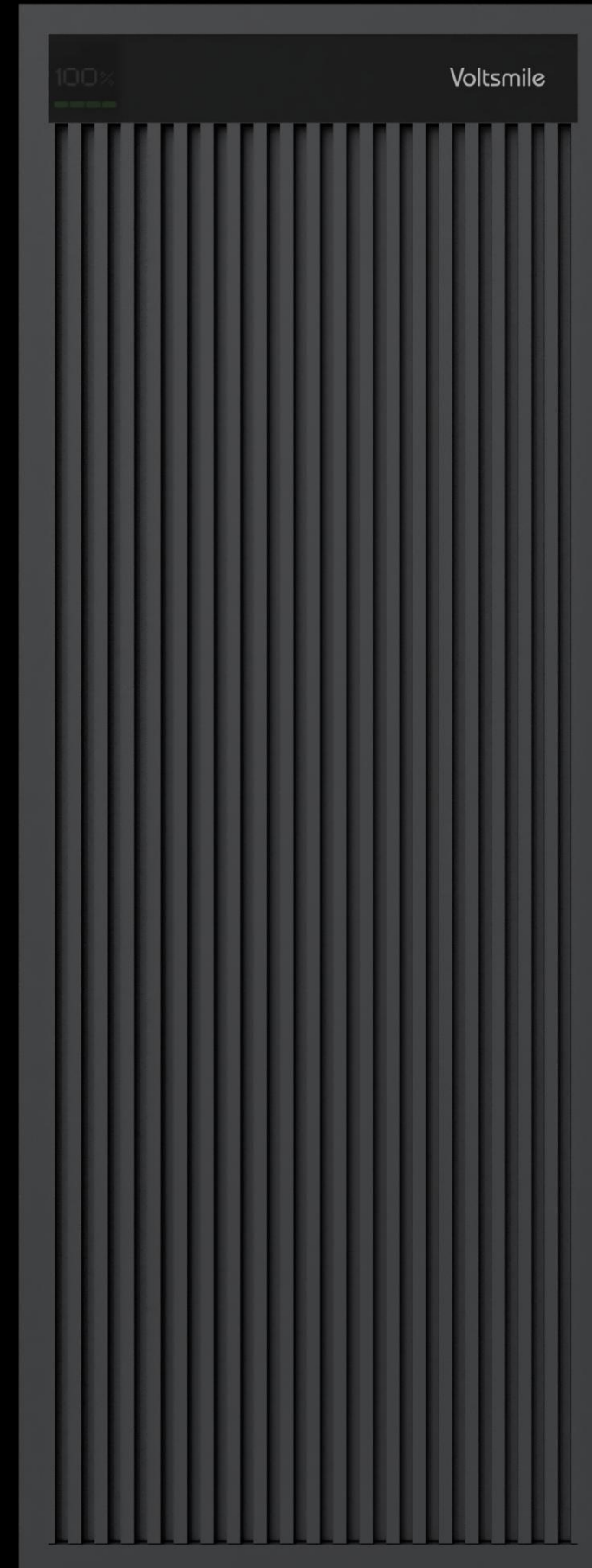


Voltsmile



COMING SOON  
ProSeries  
**RAID8**

**T**he Voltsmile Raid8 Energy Storage System, a cutting-edge solution for high-capacity energy storage. This advanced system houses eight high-voltage battery packs, providing a combined power of 41kWh with an impressive operating voltage of up to 930V. Engineered for both residential and commercial applications, the Voltsmile Raid8 delivers robust, efficient, and reliable power storage in a compact and scalable design.



**Voltsmile**



Voltsmile prioritizes excellence and reliability in every aspect of our products, and that includes the heart of their power – the battery cells. We exclusively utilize the highest quality **lithium iron phosphate** battery cells available in the market to ensure optimal performance, longevity, and safety for our customers. We guarantee that our products not only meet but exceed expectations when it comes to powering your properties. We confidently guarantee that our batteries will surpass 6000 cycles of use and coupled with our assurance of 10 years of reliable performance, showcase the robustness of our products.



Dedicated to meeting the diverse needs of our clients, we offer an extensive array of Original Equipment Manufacturer (**OEM**) services. Our commitment to customization allows businesses to tailor products to their unique specifications, fostering innovation and brand identity. Whether it's product design, manufacturing, or branding, our comprehensive OEM services enable clients to bring their visions to life. We understand that every business has distinct requirements, and our flexible approach ensures seamless collaboration to deliver tailored solutions. With a focus on quality and precision, we empower our partners to enhance their offerings and stay ahead in the dynamic market, solidifying our position as a trusted provider of versatile OEM services.



Designed with versatility in mind, this product seamlessly integrates into **19-inch** server rack systems, providing a compatible solution for users seeking efficient and standardized installations.



This battery system is designed with user convenience in mind, weighing in at **30 kilograms or below**. The lightweight construction makes it easily manageable and transportable, catering to users who prioritize portability and ease of handling.



This battery system has "+" version\* or has accessories\*\* to make it workable under extreme cold conditions. With in-built heating elements of the "+" version\* or the heating accessories\* the working temprature can go as low as **-20°C**.



This battery system boasts expandability, allowing users to tailor its functionality to their evolving needs. With the ability to grow and adapt, this product offers a versatile solution that can be customized to meet a variety of requirements. Whether it's adding extra storage capacity, integrating additional components, or incorporating advanced features through expansion modules, users have the flexibility to enhance the product's capabilities over time. This expandable design ensures that the product remains a relevant and valuable asset, capable of accommodating changes in usage scenarios or technological advancements to future-proof a wide range of applications.



This battery system is equipped with our **Rapid Connection Bus (RPC)** system incorporates a fast installation system that sets a new standard for convenience and efficiency. With a focus on user-friendly design, the fast installation system ensures swift and hassle-free setup, reducing downtime and making the process remarkably intuitive. Allowing users to effortlessly replace or install the battery with minimal effort. This feature not only saves valuable time but also enhances user satisfaction, making our battery a standout choice for those who prioritize both speed and simplicity in their properties



Setting a new standard for durability and resilience, W1 battery proudly carries an IP67 rating, making it robust enough to withstand various environmental challenges. The IP67 rating signifies that the battery is dust-tight and can withstand immersion in water up to a depth of 1 meter for 30 minutes. This level of protection ensures that the battery remains operational in harsh conditions, providing users with confidence in its reliability. Whether faced with dusty environments or potential exposure to water, our IP67-rated battery guarantees the utmost protection, making it an ideal choice for outdoor and industrial applications where durability is paramount. Embrace the peace of mind that comes with a battery designed to excel in challenging conditions, backed by the stringent IP67 rating.



Equipped with an advanced magnetic data link, this battery goes beyond conventional capabilities by offering a robust solution for upgrading and addressing potential issues. The innovative magnetic data link not only facilitates efficient streamlining the upgrade process and troubleshooting. Whether it's enhancing performance through firmware updates or swiftly identifying and fixing operational challenges, the magnetic data link empowers users with a versatile tool for optimizing the battery's functionality.



With a versatile output voltage range spanning from **51.2V to 672V**, this battery stands out as an ideal choice for installations requiring high voltage inverters in both home and mini-industrial settings. The expansive voltage capability ensures compatibility with a variety of power systems, making it well-suited for diverse applications. Whether powering residential homes with high-performance inverters or supporting the energy needs of small-scale industrial operations, this battery offers a reliable and efficient solution. Its adaptability to different voltage requirements makes it a valuable asset for those seeking a versatile energy storage solution capable of meeting the demands of both home and mini-industrial environments with varying power specifications.



Boasting an impressive output voltage range of **153.6V to 1,228.8V**, this battery emerges as an excellent choice for high voltage industrial inverter installations, catering to the energy needs of both mini-industrial facilities and homes alike. Its broad voltage spectrum underscores its adaptability, ensuring seamless integration with a variety of high-powered industrial inverters. This versatility extends beyond industrial settings, making it equally suitable for residential applications where robust power supply is paramount. Whether supporting the energy demands of a mini-industrial operation or serving as a reliable source for homes with high voltage requirements, this battery stands out as a technologically advanced and flexible solution for diverse power needs.

\* The batteries marked with the "+" designation, such as **V5+**, **V10+**, **W1+**, **V10 RPC+**, share fundamental hardware components with their standard counterparts. However, what sets them apart is the integration of built-in heating elements. Recognizable by their distinct blue color and the addition of a "+" symbol, these batteries offer an extra layer of functionality with the inclusion of heating technology. This feature proves particularly valuable in environments where temperature variations can impact battery performance. The heating elements enhance the battery's resilience in colder conditions, ensuring consistent and reliable operation. Whether it's the **V5+**, **V10+**, **W1+**, or other variants carrying the "+" users can expect not only the core capabilities of the standard versions but also the added advantage of temperature management for increased reliability in diverse operational environments.

\*\* It's worth noting that the heating accessories for these batteries, are sold separately. The associated accessories necessary for optimizing and controlling the heating features are available as additional, standalone items. This modular approach allows users to tailor their purchase based on specific needs and circumstances. Whether users require the heating functionality or not, having the accessories available separately provides flexibility in choosing the level of temperature control required for their particular use case. This ensures that customers can customize their setup according to their unique requirements, making the heating accessories a convenient and optional addition to the overall battery system.



